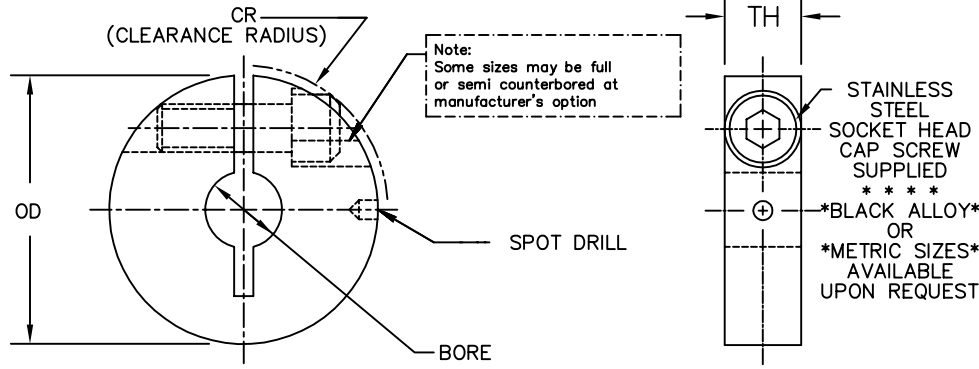


# SH1 SERIES



SUFFIX	MATERIAL	FINISH
A	ALUMINUM 2024-T351	CHROMIC ACID ANODIZE
S	STAINLESS STEEL 303	CLEAR PASSIVATE
A6	ALUMINUM 6061-T6	ALODINE

TOLERANCES			
INCH		METRIC	
.XX	±.016	.X	±.4
.XXX	±.005	.XX	±.13
BORE	+.001	BORE	+.026

CATALOG NO.	BORE		OD		TH		CR		SPOT		SCREW										
SUFFIX	IN	MM	IN	MM	IN	MM	IN	MM	IN	MM	IN & MM*										
SH1-1415.156	A	.156	3.96	.437	11.10	.156	3.96	.25	6.4	-	-	0-80									
SH1-1516.187	S	.187	4.75	.470	11.94	.16	4.1	.26	6.6	-	-	0-80									
SH1-1616.094	A S	.094	2.39	.500	12.70	.16	4.1	.32	8.1	.06	1.5	3-48									
SH1-1616.103	A S	.103	2.62																		
SH1-1616.118	A S	.118	3.00																		
SH1-1616.125	A S	.125	3.18																		
SH1-1616.141	A S	.141	3.58																		
SH1-1616.157	A S	.157	4.00																		
SH1-1616.188	A S	.188	4.78																		
SH1-1812.181	A S	.181	4.60	.562	14.27	.125	3.18	.33	8.4	-	-	1-72									
SH1-1812.188	A S	.188	4.78																		
SH1-1812.197	A S	.197	5.00																		
SH1-1812.250	A S	.250	6.35																		
SH1-1815.125	A S	.125	3.18	.562	14.27	.156	3.96	.34	8.6	-	-	2-56									
SH1-1815.181	A S	.181	4.60																		
SH1-1815.188	A S	.188	4.78																		
SH1-1815.197	A S	.197	5.00																		
SH1-1815.219	A S	.219	5.56																		
SH1-1815.250	A S	.250	6.35																		
SH1-1815.260	A S	.260	6.60																		
SH1-2015.125	A S	.125	3.18	.625	15.88	.156	3.96	.34	8.6	.07	1.8	2-56									
SH1-2015.157	A S	.157	4.00																		
SH1-2015.181	A S	.181	4.60																		
SH1-2015.188	A S	.188	4.78																		
SH1-2015.197	A S	.197	5.00																		
SH1-2015.219	A S	.219	5.56																		
SH1-2015.220	A S	.220	5.60																		
SH1-2015.236	A S	.236	6.00																		
SH1-2015.250	A S	.250	6.35																		
SH1-2015.250	A S	.250	6.35																		
SH1-2015.250	A S	.250	6.35																		
SH1-2015.260	A S	.260	6.60																		
SH1-2015.260	A S	.260	6.60																		
SH1-2015.276	A S	.276	7.00																		
SH1-2019.181	A S	.181	4.60	.625	15.88	.19	4.8	.34	8.6	.07	1.8	4-40									
SH1-2019.188	A S	.188	4.78																		
SH1-2019.250	A S	.250	6.35																		
SH1-2019.260	A S	.260	6.60																		
SH1-2025.181	A S	.181	4.60	.625	15.88	.25	6.4	.39	9.9	-	-	4-40									
SH1-2225.312	A	.312	7.92																		
SH1-2418.250	S	.250	6.35	.750	19.05	.188	4.78	.41	10.4	-	-	4-40									
SH1-2425.250	S	.250	6.35	.750	19.05	.250	6.35	.44	11.2	-	-	4-40									
SH1-2425.313	S	.313	7.95																		
SH1-2814.250	S	.250	6.35	.875	22.23	.14	3.5	.46	11.7	-	-	2-56									
SH1-2819.220	A S	.220	5.60	.875	22.23	.19	4.8	.48	12.2	-	-	4-40									
SH1-2819.250	A S	.250	6.35																		
SH1-2819.260	A S	.260	6.60																		
SH1-2819.299	A S	.299	7.60																		
SH1-2819.312	A S	.312	7.92																		
SH1-2819.339	A S	.339	8.60																		
SH1-2819.339	A S	.339	8.60																		
SH1-2819.375	A S	.375	9.53																		
SH1-2825.156	A	.156	3.96	.875	22.23	.250	6.35	.51	13.0	-	-	6-32									
SH1-2825.157	A	.157	4.00																		
SH1-2825.188	A S	.188	4.78																		
SH1-2825.197	A S	.197	5.00																		
SH1-2825.236	A S	.236	6.00																		
SH1-2825.250	A S	.250	6.35																		
SH1-2825.260	A S	.260	6.60																		
SH1-2825.276	A S	.276	7.00																		
SH1-2825.281	A S	.281	7.14																		
SH1-2825.313	A S	.313	7.95																		
SH1-2825.315	A S	.315	8.00																		
SH1-2825.339	A S	.339	8.60																		
SH1-2825.358	A S	.358	9.09																		
SH1-2825.368	A S	.368	9.35																		
SH1-2825.375	A S	.375	9.53																		
SH1-3037.438	A L	.438	11.13										.937	23.80	.37	9.5	.49	12.5	-	-	6-32
SH1-3625.375	A S	.375	9.53										1.125	28.58	.25	6.4	.63	16.0	.19	4.8	8-32
SH1-3625.378	A S	.378	9.60																		
SH1-3625.394	A S	.394	10.00																		
SH1-3625.437	A S	.437	11.10																		
SH1-3625.457	A S	.457	11.60																		
SH1-4032.250	A S	.250	6.35	1.250	31.75	.32	8.1	.63	16.0	-	-	8-32									
SH1-4032.375	A S	.375	9.53																		
SH1-4032.394	A S	.394	10.00																		
SH1-4032.433	A S	.433	11.00																		
SH1-4032.437	A S	.437	11.10																		
SH1-4032.457	A S	.457	11.60																		
SH1-4032.472	A S	.472	12.00																		
SH1-4032.500	A S	.500	12.70																		
SH1-4032.535	A S	.535	13.60																		
SH1-4032.551	A S	.551	14.00																		
SH1-4032.562	A S	.562	14.27																		
SH1-4032.591	A S	.591	15.00																		
SH1-4032.625	A S	.625	15.88																		
SH1-4032.630	A S	.630	16.00																		
SH1-4231.500	S	.500	12.70										1.312	33.32	.31	7.9	.70	17.8	-	-	8-32
SH1-4231.512	S	.512	13.00																		
SH1-4231.625	S	.625	15.88																		
SH1-4832.813	S	.813	20.65	1.500	38.10	.32	8.1	.80	20.3	-	-	8-32									
SH1-4850.750	S	.750	19.05	1.500	38.10	.50	12.7	.94	24.0	-	-	1/4-20									
SH1-6432.875	A6	.875	22.23	2.000	50.10	.32	8.1	2.00	51.1	-	-	8-32									
SH1-6432.938	A6	.938	23.83																		
SH1-6432.945	A6	.945	24.00																		
SH1-6432.984	A6	.984	25.00																		
SH1-64321.00	A6	1.000	25.40																		
SH1-64321.13	A6	1.125	28.58																		
SH1-64321.18	A6	1.181	30.00																		
SH1-64321.25	A6	1.250	31.75																		
SH1-64321.37	A6	1.375	34.93																		
SH1-64321.38	A6	1.378	35.00																		